



NOMAD
 **YACHTS**

NOMAD YACHTS

Pioneering manufacturer Gulf Craft has been a leading innovator in boat design since 1982. The company continues to redefine the way enthusiasts experience life on the water by developing high performance, ever more luxurious craft for local and international clientele wanting something truly special.

One of Gulf Craft's proudest achievements has been its hugely successful Nomad Yachts brand – the ultimate in elegance and design ingenuity, it is one of the first ranges to recognise and respond to the needs of more adventurous customers.

The soul of a Nomad Yacht is its semi displacement hull, a design that sets the boat apart and provides its distinctive seakeeping and ocean-going capability. For those looking to venture further afield, this hull design copes very well in sudden heavy weather; Nomad Yachts are extremely robust and constructed to slice through big waves.

The hull has a different profile to a fully planing hull and is much finer at the bow, with a more rounded underwater area. This allows it to cut through heavier seas with a much smoother motion, providing a more pleasant experience for those onboard.

Nomad Yachts are known and revered for innovation, smart layouts, spacious interiors that incorporate unspoilt ocean vistas, along with surprising extras that delight upon discovery. The entire range was built for enjoying life out at sea, while satisfying the human urge to chart unknown waters.

Let the adventure begin.



The stylish yet powerful Nomad 65 feels ultra-roomy due to a free-flowing use of onboard space. The first hybrid hull from Gulf Craft, this is an exceptional member of the fleet of long-range yachts.

Whatever mood you happen to be in – whether you want to push the throttle, or simply cruise and relax – the Nomad 65 offers the greatest efficiency and economy at all speeds. With spacious above and below-deck quarters, guests can spend as much time as they like on the water far away from the stresses of everyday life.

This yacht offers a great overall package of features – including a huge fly-bridge space for a 65-foot yacht.



NOMAD 65



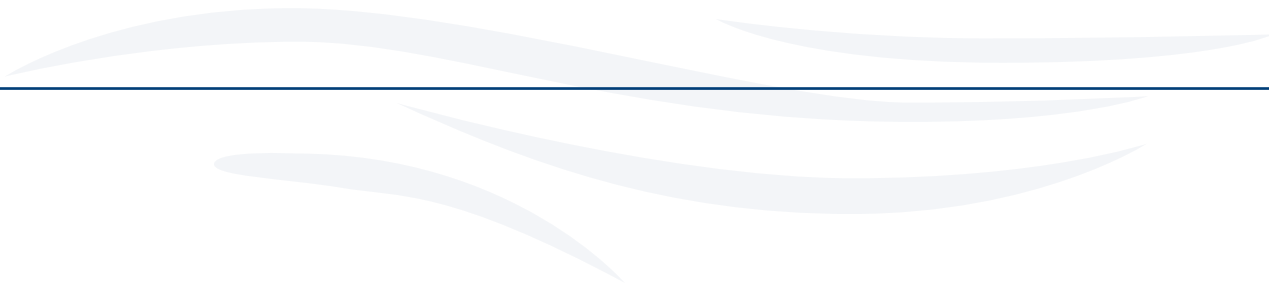
Saloon



Helm and Dining



Day Head





Owner's Cabin



Owner's Cabin



Owner's Head





Twin Guest Cabin

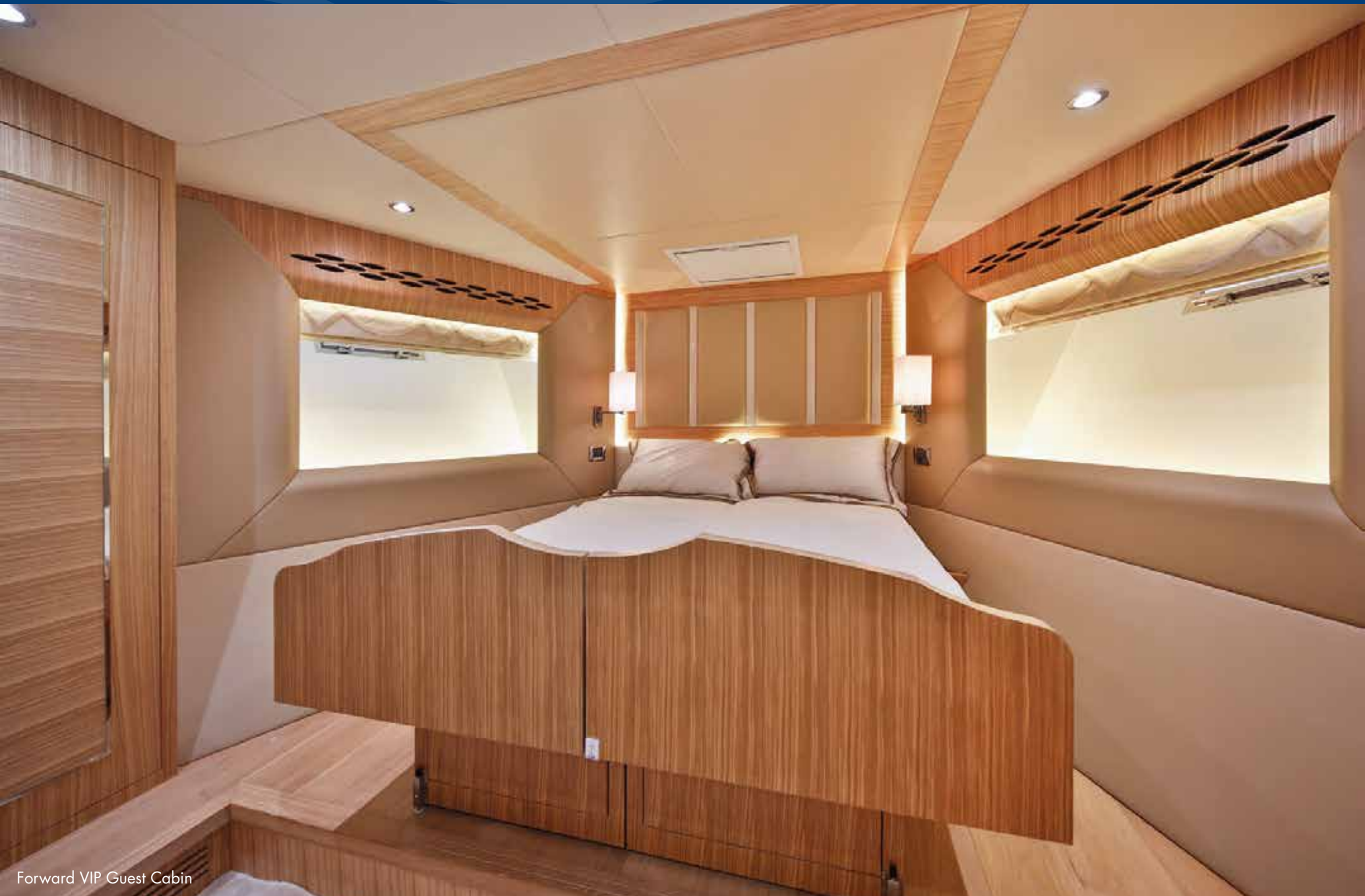


Twin Guest Cabin



Twin Guest Head





Forward VIP Guest Cabin



Forward VIP Guest Cabin



Forward VIP Guest Head





Flybridge



Bow Seating



DECK PLANS



FLY-BRIDGE



MAIN DECK



LOWER DECK

TECHNICAL SPECIFICATIONS

LENGTH OVERALL	: 65 ft 9 in (20.00 m)	BEAM	: 18 ft 2 in (5.55 m)
DRAFT	: 4 ft 9 in (1.45 m)	ACCOMMODATION	: 3 Cabins (6 Berths)
DISPLACEMENT	: 44 t Approx.		: 2 Crew Cabins (2 Berths)
FUEL CAPACITY	: 1,500 US gal (5,680 l)	BATHROOMS	: 3 Heads + 1 Day Head
WATER CAPACITY	: 200 US gal (750 l)	GENERATOR	: 28 kW, 50 Hz
BLACK WATER CAPACITY	: 65 US gal (245 l)	POWER OPTION	: 2 x 800 hp
GREY WATER CAPACITY	: 65 US gal (245 l)		

CLASSIFICATION: CE (Design Category A)

SPEAK TO US

For further information about the Nomad Yachts collection, contact our team who will be pleased to assist you.

E. gci@gulfcraftinc.com
T. +971 6 7406060

Follow us on Facebook
[@NomadYachts](https://www.facebook.com/NomadYachts)

Follow us on Instagram
[@NomadYachts](https://www.instagram.com/NomadYachts)



Pictures in this catalogue may be taken from different vessels of the same type for example purpose only. Performance estimates are given in good faith, but are in no way guaranteed. Dirt on the hull, damage to the propellers, external water and air temperatures and added weight, fuel and water carried can all adversely affect performance. For these and other reasons we can give no performance guarantees. Data and characteristics are not binding, details, colors, descriptions and illustrations are for information purpose only. The drawings and pictures may include specific equipment or modifications which are not part of the standard specification of the vessel, standard specifications may be defined differently in different sales territories. Gulf Craft Inc. reserves the right to make any changes in specifications or equipment without prior notice. In case of any inconsistencies between specification sheet, product catalogue and price list, the price list prevails. Customers are recommended to contact our sales representative to reconfirm standard and optional features on the vessels.

by *Gulf Craft*

nomad.gulfcraftinc.com